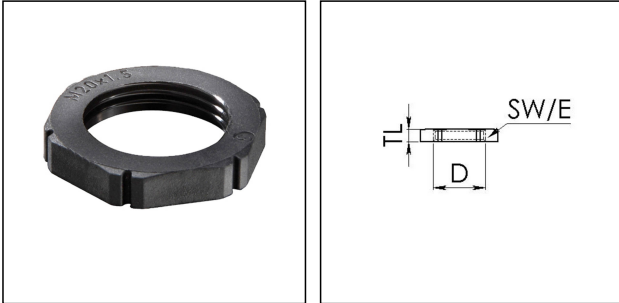


MUG 13,5

Locknut, polyamide, RAL 9005, Pg13,5



Products may differ in size, colour and appearance to those shown. If you require further information or customisation, please contact us directly.



Material	Polyamide, fibre reinforced
Temp. range min	-40 °C
Temp. range max	100 °C
Glow wire test	650 °C
Thread type	PG
Ø Connection thread D	13,5
Total length TL	6 mm
Key width SW	27 mm
Collar diameter (E)	29 mm
Product Color	RAL 9005
Order no. RAL 9005	10060683
Type	MUG 13,5
Packing unit	100
ETIM-Classification	EC000940

06.07.2020

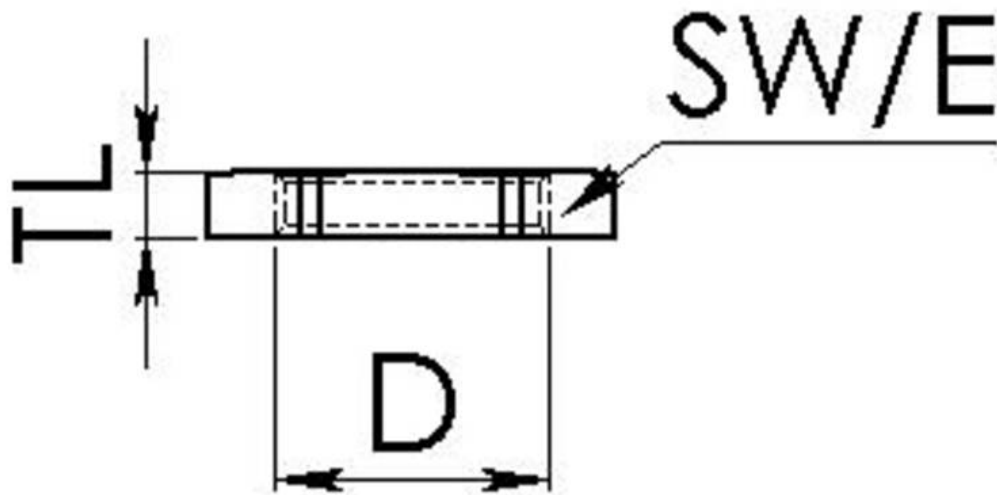
Your Contact:

WISKA Hoppmann GmbH

Kisdorfer Weg 28 · 24568 Kaltenkirchen · Germany

☎ +49-4191-508-0 · 📠 +49-4191-508-209

contact@wiska.de · www.wiska.com



Your Contact:

WISKA Hoppmann GmbH

Kisdorfer Weg 28 · 24568 Kaltenkirchen · Germany

☎ +49-4191-508-0 · 📠 +49-4191-508-209

contact@wiska.de · www.wiska.com